



BARTLETT Instrument Company

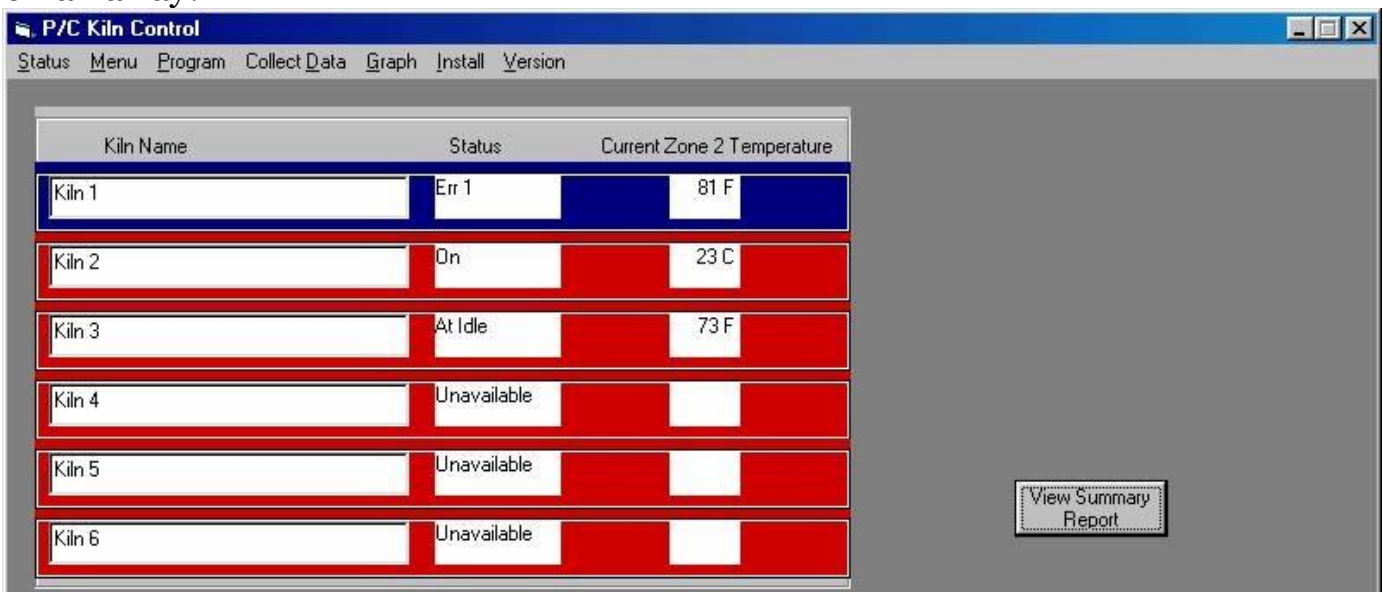
Monitor Your Firings More Closely With Our KISS Program!

[Home](#) • [Controller Overview](#) • [V6CF](#) • [RTC1000](#) • [K.I.S.S.](#)

The KISS program is a great tool used to monitor your Bartlett kiln controller during a firing. At a glance, the user can monitor up to 50 kilns simultaneously by displaying all 50 kilns' current status and temperature. By clicking the Status tab, you can find more in-depth information such as Preheat Time, Current Program, and Hold Time, among other things, for the selected kiln.

With the ability to remotely access all of your kilns in one place, it also includes the capability to collect and store data from the firing process. This allows for a detailed evaluation of the kiln's temperature during the firing. If a problem arises and you need to stop the firing, just press the Stop button in KISS to end the firing.

Once you have run a firing, graphing the data from it is simple. Click the Graph tab, select the file to be graphed, select the parameters to be graphed, and press Graph it. All of the information from the firing will be presented in a graph for easy viewing and analysis. KISS can be a great tool for any kiln user to monitor and track firings. If you'd like more information or have questions, we're just a phone call or email away!



BARTLETT

Instrument Company

1032 Avenue H

Fort Madison, IA 52627

Phone: 1(888)404-9026 Fax: (319)372-5560

www.bartinst.com

**Get social with us to keep up with
our latest deals and tips!**