

CIS 2015 Sample Screens

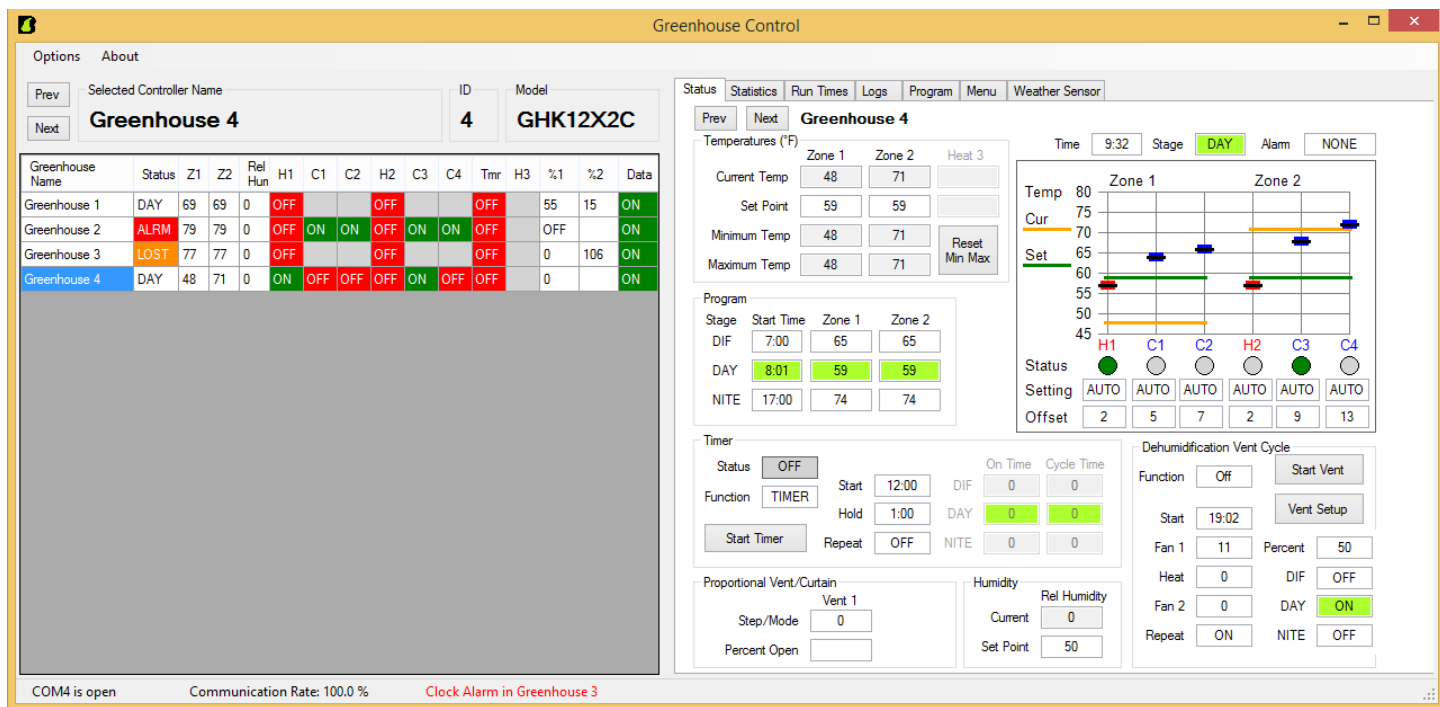


Figure 1: Overview of CIS 2015 Status screen.

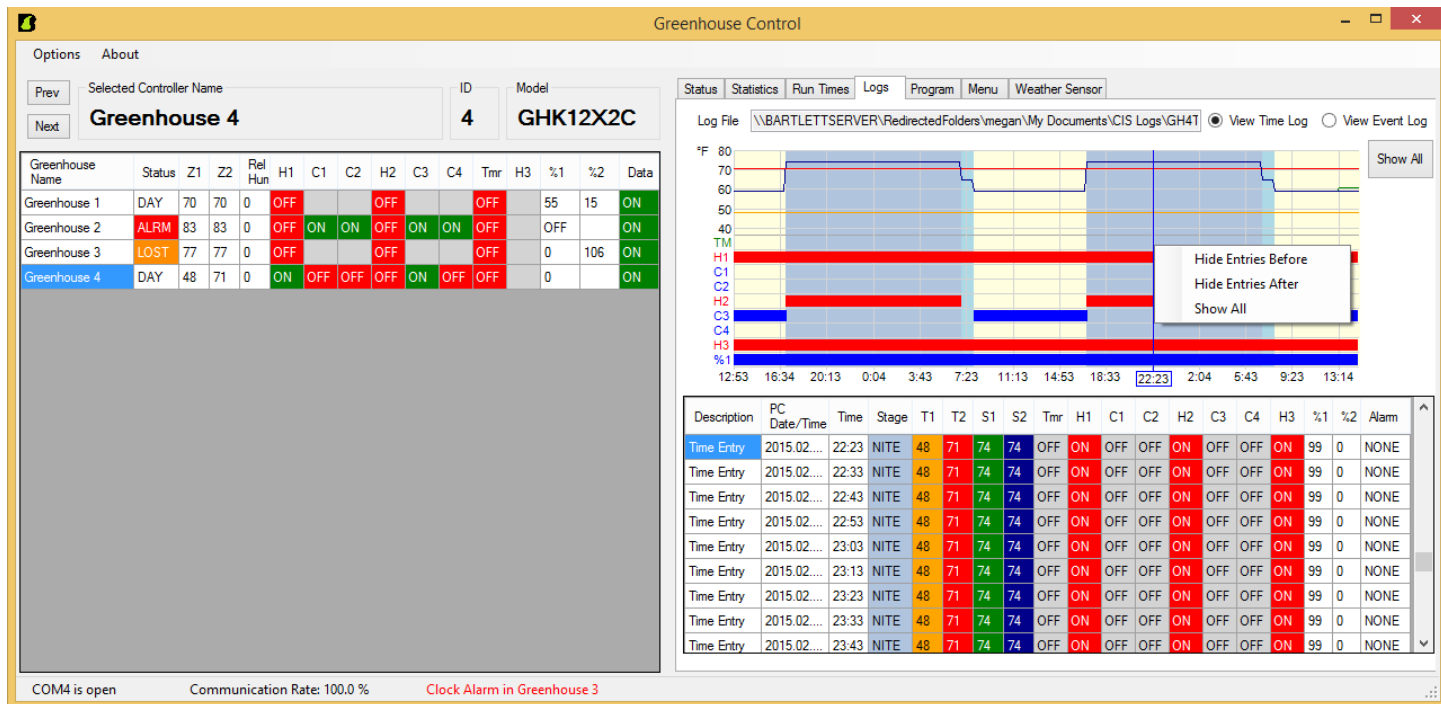


Figure 2: CIS 2015 Logs screen.

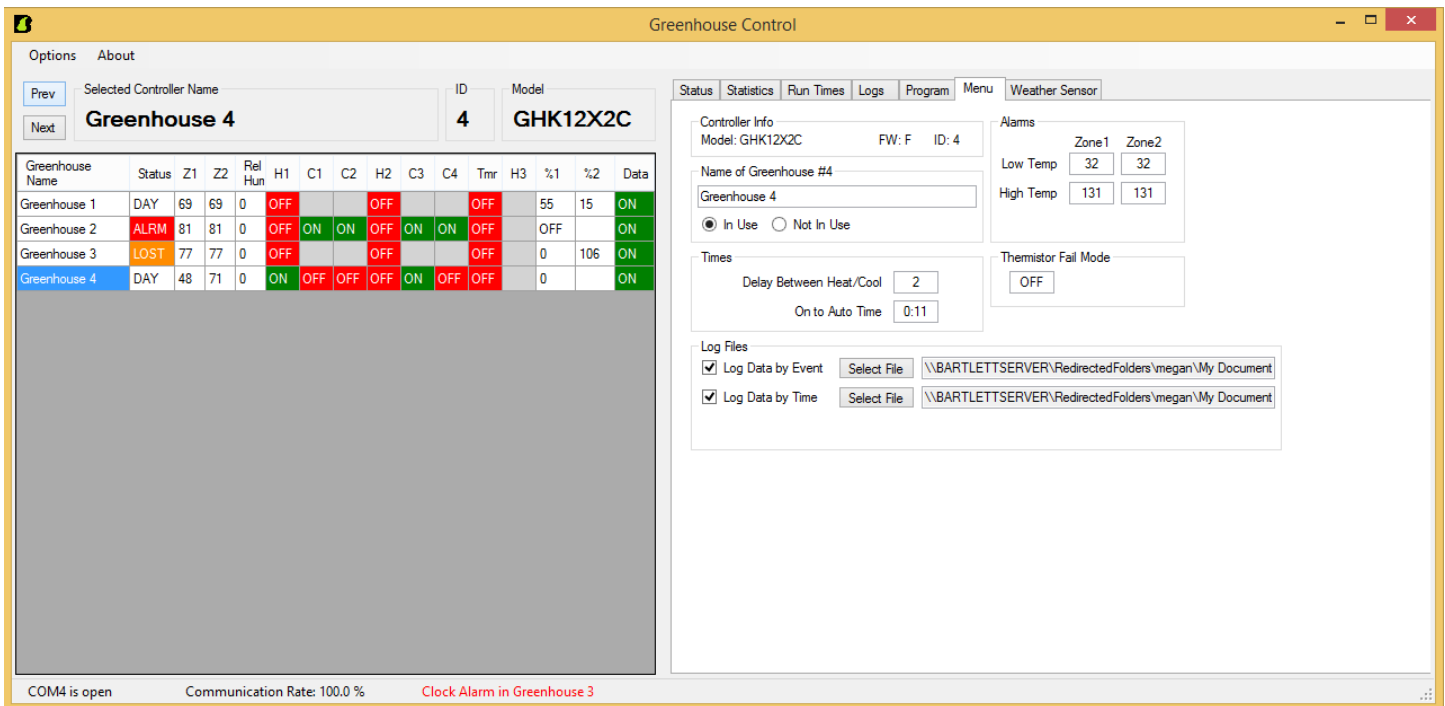


Figure 3: CIS 2015 Menu options screen.

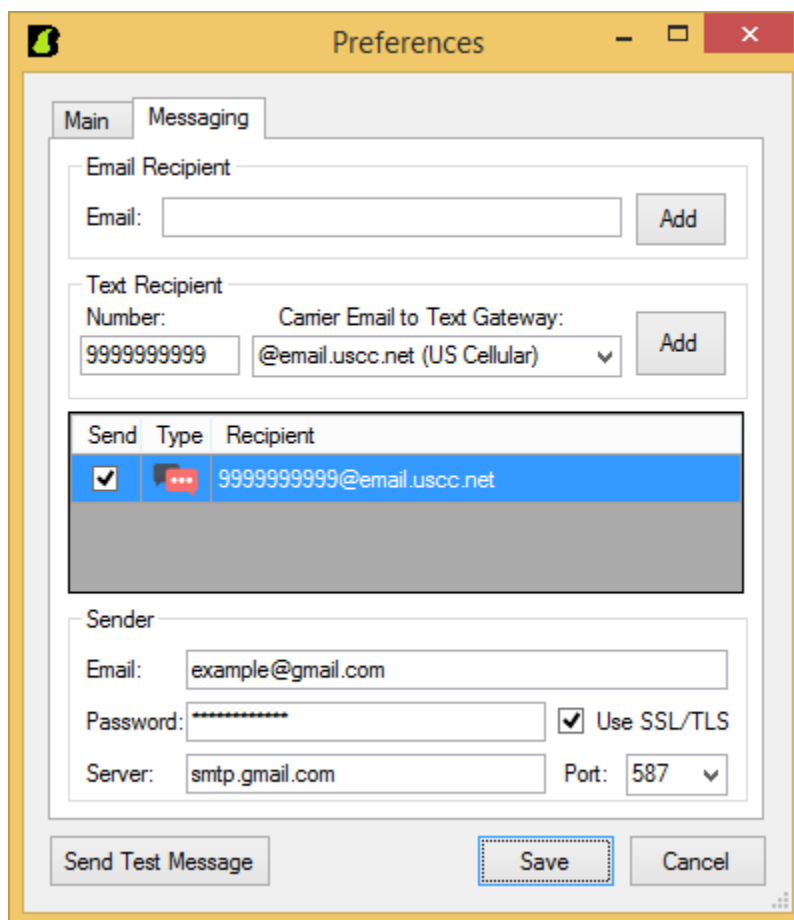


Figure 4: Sample of Messaging screen for email and text alerts

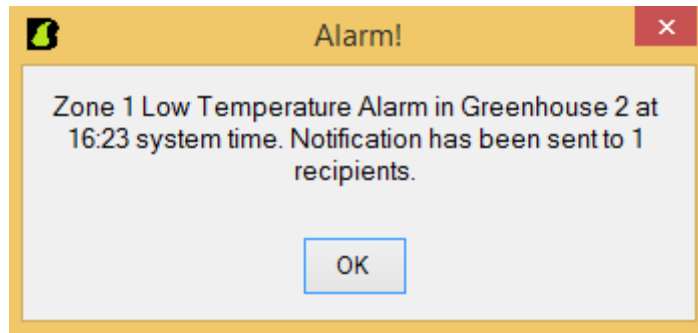


Figure 5: Sample of what an alarm may look like from CIS 2015

Greenhouse Control

Options About

Prev Selected Controller Name **Greenhouse 4** ID **4** Model **GHK12X2C** Next

Greenhouse Name	Status	Z1	Z2	Rel Hum	H1	C1	C2	H2	C3	C4	Tmr	H3	%1	%2	Data
Greenhouse 1	DAY	69	69	0	OFF			OFF			OFF		55	15	ON
Greenhouse 2	ALRM	81	81	0	OFF	ON	ON	OFF	ON	ON	OFF		OFF		ON
Greenhouse 3	LOST	77	77	0	OFF			OFF			OFF		0	106	ON
Greenhouse 4	DAY	48	71	0	ON	OFF	OFF	OFF	ON	OFF	OFF		0		ON

Current Readings

Wind Speed: 12 MPH, Temperature: 0 °F, Humidity: 60 %, Rain: 0, Time: 11:43

Wind Alarm: ON

Controls:

- No Manual Override
- W/R Alarm Output On
- Wind Alarm Output On
- Rain Alarm Output Off
- Heater Output Off
- High Temp Alarm Out Off
- Low Temp Alarm Out Off

Settings:

Activate: 5, Drop Out: 7, Units: English, Response Time: 1, Delay: 0:00, Rain Sensitivity: High

Buttons: Activate Now, Cancel Now, Reset

Day	Max Wind	Max Time	Wind Alarm	Rain Alarm
Today	17 MPH	11:42	11:43	0:00
Yesterday	0 MPH	0:00	0:00	0:00
Saturday	0 MPH	0:00	0:00	0:00
Friday	0 MPH	0:00	0:00	0:00
Thursday	0 MPH	0:00	0:00	0:00
Wednesday	0 MPH	0:00	0:00	0:00
Tuesday	0 MPH	0:00	0:00	0:00

COM4 is open Communication Rate: 100.0 % Zone 1 Low Temperature Alarm in Greenhouse 2

Figure 6: Sample screen of the Wind/Rain Alarm being monitored via CIS 2015